



Eisner Health 2021 Annual Impact Report

Caring for Los Angeles since 1920



Together, we improve the health and well-being of
the people and communities we serve.



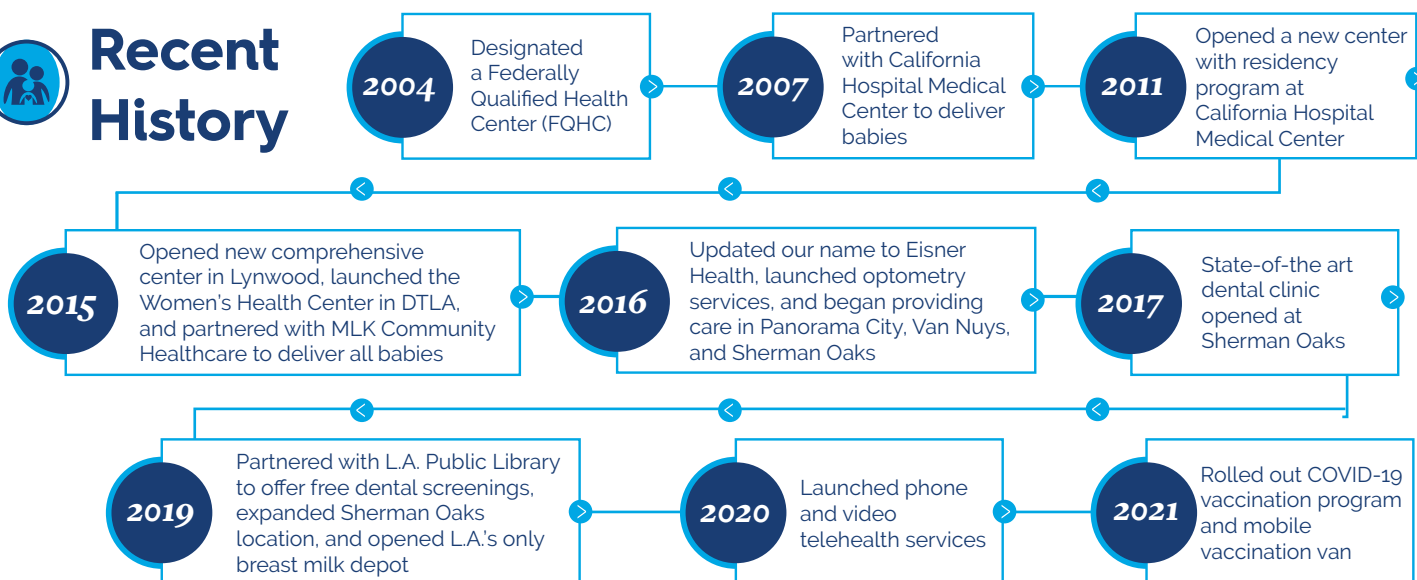
Our History

On March 22, 1920, Eisner Health was founded as the Anita M. Baldwin Hospital for Babies. Ms. Baldwin founded the hospital after losing her own twins shortly after birth. She took her tragedy and dedicated herself to supporting the health of mothers and babies, first occupying three beds on the campus of California Hospital. The hospital continued to grow and by 1945, we opened the first preschool dental clinic in the Western U.S. and oversaw 30 inpatient pediatric beds. In later years, our mission expanded from infants and children, to adults, families, and seniors across their lifespan.

Over the last two decades, Eisner Health has expanded to new locations and enhanced our capacity to meet evolving community needs. With a transformative gift from the Eisner Foundation in 2002, our organization was renamed, and two years later, we received certification as a Federally Qualified Health Center. Throughout the COVID-19 pandemic, we have met the challenge of the pandemic head on. Our patients include our community's most vulnerable residents and many suffer from chronic conditions, which place them at high risk for negative outcomes from COVID-19. We have found new and innovative ways to care for them, including the introduction of telehealth services, mobile health, and in 2021, provided over 30,000 COVID-19 vaccines.



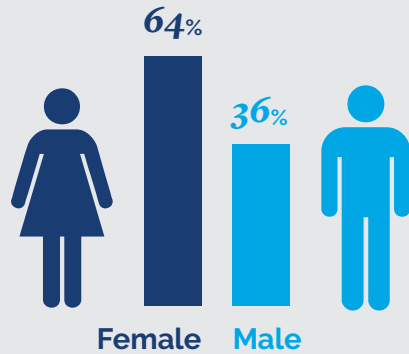
Recent History



Eisner Health's Services

- Behavioral Health
- Case Management
- Care Coordination
- Dermatology
- Eligibility Assistance
- Family Planning
- Geriatric Care
- Health Education
- Immunizations
- Labor and Delivery
- Nutrition Counseling
- Optometry
- Pharmacy
- Preventive Child and Adult Dental
 - Specialty Dental Services
 - Cleft Lip/Cleft Palate Program
 - Orthodontics
- Primary Adult Care
- Primary Pediatric Care
- Well-Child Services
- Women's Health
 - Obstetrics/Gynecology
 - Certified Nurse-Midwifery Program
 - Pre- and Post-Natal Education Program

Demographics



17 locations
183,986* total visits
11% increase from 2020

103

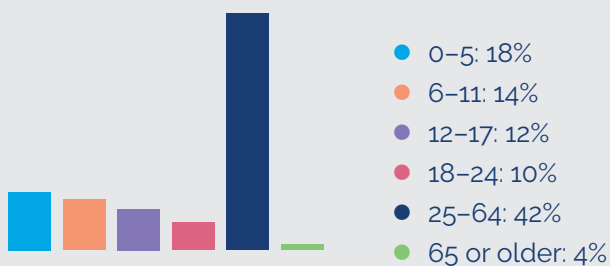
patients elected to report they are transgender, gender non-conforming, or non-binary



1,929

babies delivered

Age Groups



Visit Types

- Medical: 80%
- Dental: 9%
- Supportive Services: 5%
- Behavioral Health: 5%
- Vision: 1%



98%

of patients living at or below 200% the federal poverty level

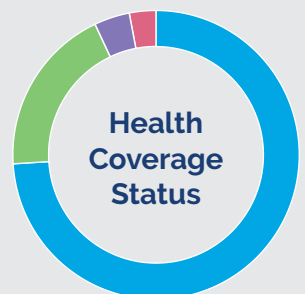
300+

the number of zip codes where our patients reside



- Hispanic/Latino: 70%
- Mixed-Race: 3%
- Unreported: 16%
- African-American: 7%
- White: 3%
- Asian: 1%

- Medicaid: 78%
- Uninsured: 15%
- Private: 3%
- Medicare: 4%





Eisner Health Locations



Eisner Health Locations

- 1. Downtown Los Angeles**
1500-1530 S. Olive St., Los Angeles, CA 90015
- 2. Women's Health Center**
1513 S. Grand Ave., Ste. 220 & Ste. 250, Los Angeles, CA 90015
- 3. Family Medicine Center at California Hospital**
1400 S. Grand Ave., Ste. 101, Los Angeles, CA 90015
- 4. Student and Family Wellness Center at Santee Educational Complex**
1921 Maple Ave., Los Angeles, CA 90011
- 5. Panorama City**
15251-15253 Roscoe Blvd., Panorama City, CA 91402
- 6. Van Nuys**
6618 Van Nuys Blvd., Van Nuys, CA 91405
- 7. Sherman Oaks**
15477 Ventura Blvd., Ste. 300, Dental Clinic Ste. LL, Dermatology Ste. 100, Sherman Oaks, CA 91403
- 8. Lynwood**
3680 E. Imperial Hwy., Ste. 200, Lynwood, CA 90262
- 9. Mobile Van**

- 10. California Hospital Medical Center**
1401 S. Grand Ave., Los Angeles, CA 90015
- 11. MLK Community Healthcare**
1680 E. 120th St., Los Angeles, CA 90059

Partner Locations

- 12. National Health Foundation**
1032 West 18th Street., Los Angeles
- 13. Women Infant Children (WIC)**
1649 Washington Blvd., Los Angeles, CA 90007
- 14. Family Planning Clinic at Los Angeles High School**
4650 W. Olympic Blvd., Los Angeles, CA 90019
- 15. San Pedro Street Elementary**
1635 San Pedro St., Los Angeles, CA 90015
- 16. Nevin Elementary**
1569 E. 32nd St, Los Angeles, CA 90011
- 17. Wadsworth Avenue Elementary**
981 E. 41st St, Los Angeles, CA 90011



Eisner Health's Commitment

We believe health care is a human right. At Eisner Health, we work to address disparities, improve health care outcomes and access to care across Los Angeles County, serving patients in over 300 zip codes. When people have regular access to affordable, integrative, and culturally competent health care, it results in better long-term health outcomes that directly correlate to increased education, career opportunities, and income.

Embedded in our mission is a commitment to serve all in our community, regardless of one's ability to pay. The majority of our patients live in urban neighborhoods that are densely populated with large multi-generational families, challenged by high rates of chronic disease and shorter life expectancies. Eisner Health addresses these challenges and more. Our success is a result of focusing on the entire

household, not just the individual patient. We know that our patients' needs do not stop at health care. We connect patients and their families to social, legal, and educational services, treating all people with the dignity and care they deserve. Your support of Eisner Health benefits the lives and health care of vulnerable children, families and seniors in Los Angeles — creating a healthier community for all of us.



If you have any questions, please reach out to Leigh Stenberg, Vice President, Development + External Affairs at lstenberg@eisnerhealth.org or (213) 747-5542, ext. 3463.



 eisnerhealth.org

 [@EisnerHealth](https://www.facebook.com/EisnerHealth)

 [@eisner_health](https://www.instagram.com/eisner_health)